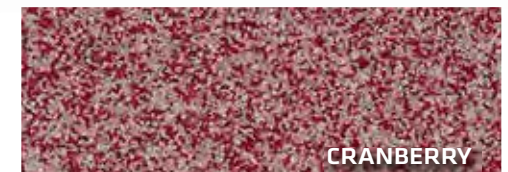
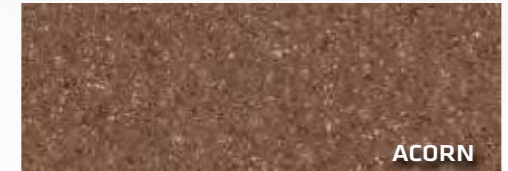
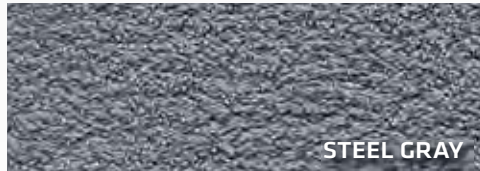


STONSHIELD®

Textured, easy-to-clean, optimal design elements and floors that never skimp on performance. These color quartz broadcast systems are a cost-effective option for manufacturing areas and commercial spaces. Discover the unlimited design capabilities available in various finishes, patterns and colors.



ESD incorporates carbon materials that are naturally black and darken the appearance of the floor. **ESD** Stonshield systems overall look black/gray compared to their standard counterparts regardless of color chosen. Below are examples of the color shift of the ESD system. All colors are available in ESD.



Color matching available with additional lead time, minimum order requirements and a slight premium. Color reproductions are as accurate as modern photography and quality printing methods can produce. For actual color, please request a sample. www.stonhard.com. ©2024 Stonhard

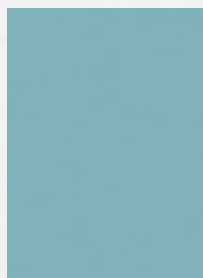


PREMIUM COLORS

Stonshield and Stonblend floors, both made with color quartz aggregate, are available in standard (in-stock colors), as well as a broad range of premium colors (made to order and with a slight up-charge). Premium color tweeds can be created using any of the solid colors shown in this guide. See our interactive Color Visualizer found on our website, [stonhard.com/under/Color Collections](http://stonhard.com/under/Color_Collections). Stonshield floors are offered in both matte and gloss finishes, Stonblend is offered in a matte finish only. Both systems and are ideal for both industrial and commercial spaces.



2058C **3058C**



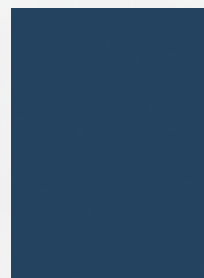
2035C **3035C**



2037C **3037C**



2038C **3038C**



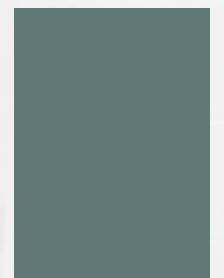
1012C **852MC**



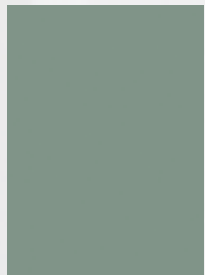
2039C **3039C**



1013C **3060C**



2036C **3036C**



2050C **862MC**



1016C **856MC**



2044C **3044C**



2043C **3043C**



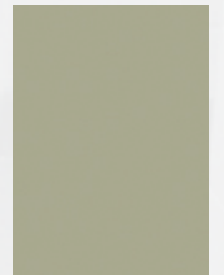
2056C **868MC**



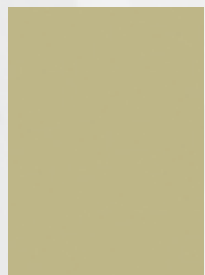
2057C **871MC**



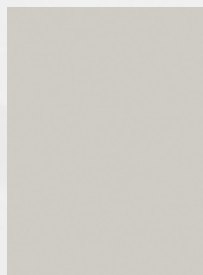
2042C **3042C**



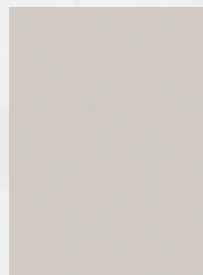
2052C **864MC**



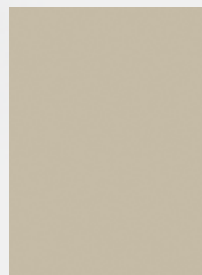
2003C **3003C**



2023C **3023C**



1019C **859MC**



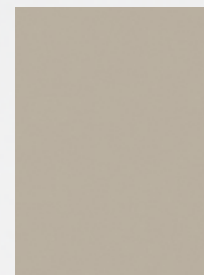
1010C **850MC**



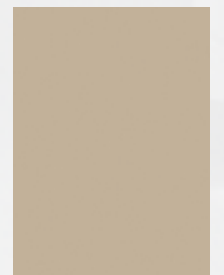
2054C **866MC**



2000C **3000C**



2048C **860MC**



2001C **3001C**

* bold references Stonblend version

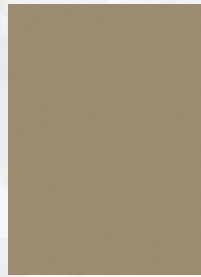
PREMIUM COLORS



1018C **3061C**



2006C **3006C**



2002C **2003C**



2008C **3008C**



2007C **3007C**



1013C **3060C**



2004C **3004C**



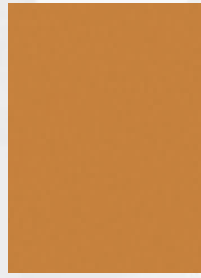
1034C **870MC**



2013C **3013C**



2014C **3014C**



2059C **3059C**



2010C **3010C**



1033C **869MC**



2055C **867MC**



2011C **3011C**



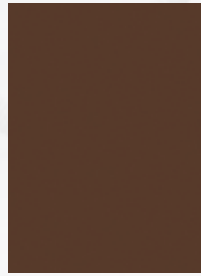
2012C **3012C**



2017C **3017C**



1020C **872MC**



2015C **3015C**



1014C **854MC**



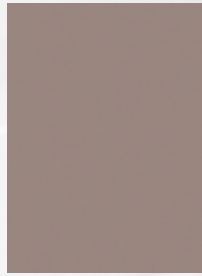
2016C **3016C**



1017C **857MC**



2053C **865MC**



1022C **3063C**



2045C **3045C**



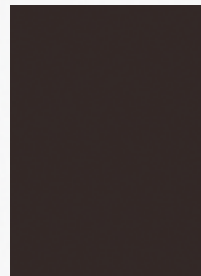
2046C **3046C**



1021C **3062C**



2047C **3047C**



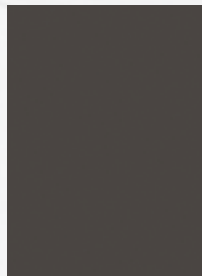
2021C **3021C**



2022C **3022C**

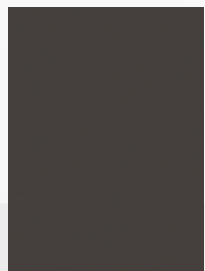


1011C **851MC**



2049C **861MC**

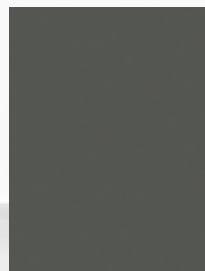
PREMIUM COLORS



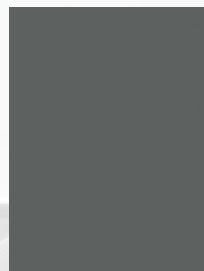
2018C **3018C**



2019C **3019C**



2020C **3020C**



2034C **3034C**



2041C **3041C**



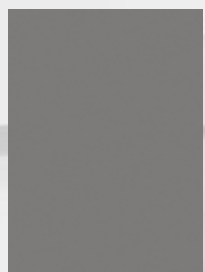
2040C **3040C**



2030C **3030C**



2031C **3031C**



2033C **3033C**



1015C **855MC**



2025C **3025C**



2024C **3024C**



2026C **3026C**



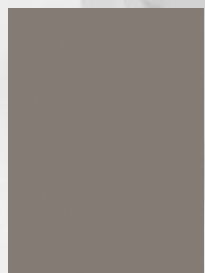
2028C **3028C**



2027C **3027C**



2032C **3032C**



2051C **863MC**