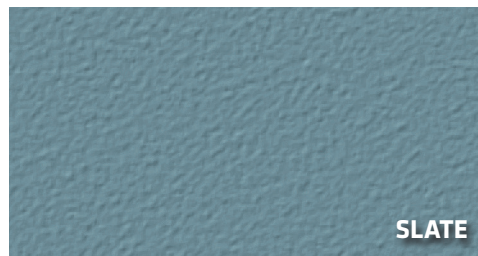
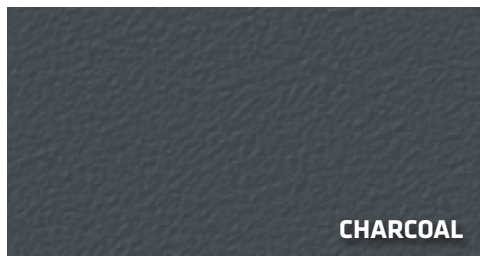
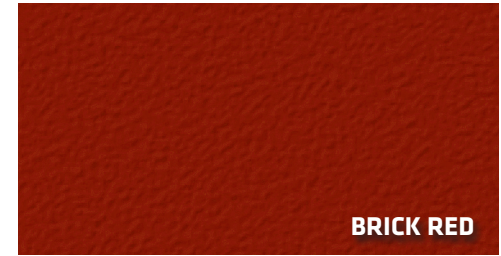
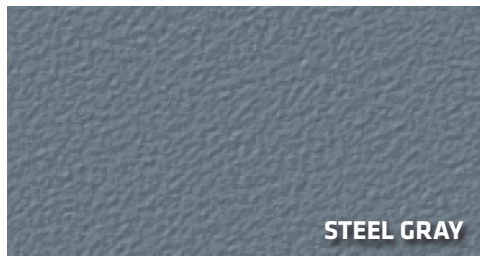
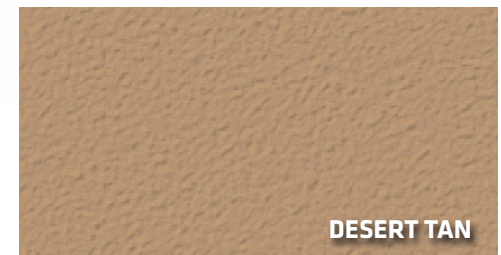
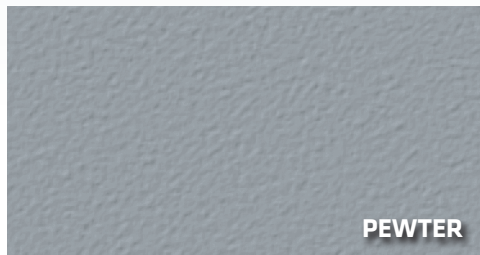
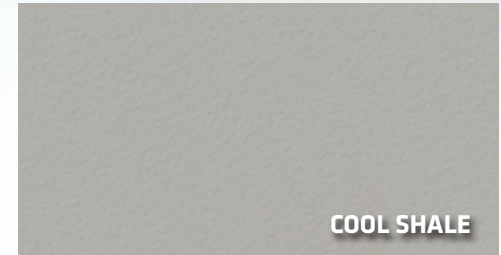
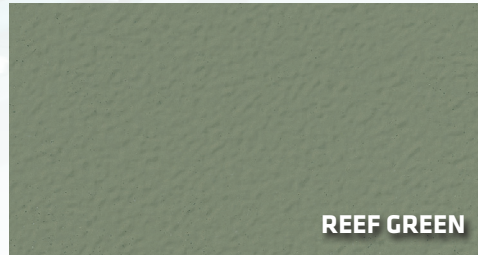
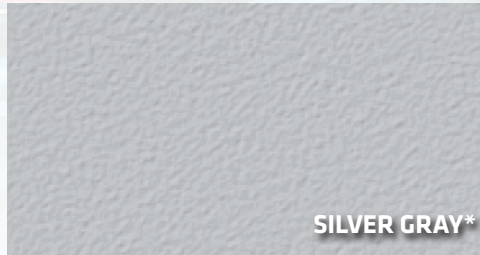


STONGARDTM MR MX

High-performance, chemical and crack-resistant floors formulated for mechanical equipment rooms, pump mezzanines and areas requiring waterproof solutions. Stongard delivers slip resistance and positive side moisture protection.



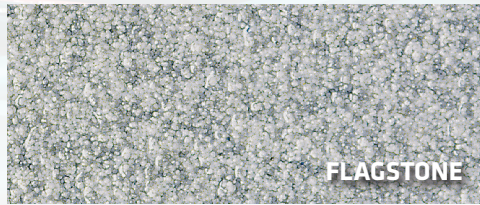
*Silver Gray color available with Stongard MR and MX systems only.

Color matching available with additional lead time, minimum order requirements and a slight premium. Color reproductions are as accurate as modern photography and quality printing methods can produce. For actual color, please request a sample. www.stonhard.com. ©2024 Stonhard



STONGARD[®] MD

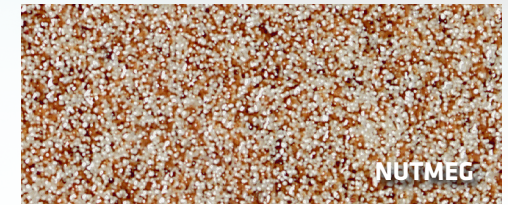
High-performance, water-proof, slip-resistant floor formulated for mechanical equipment rooms, pump mezzanines and areas requiring a positive-side waterproof solution.



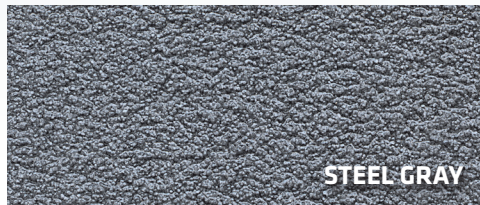
FLAGSTONE



MALT



NUTMEG



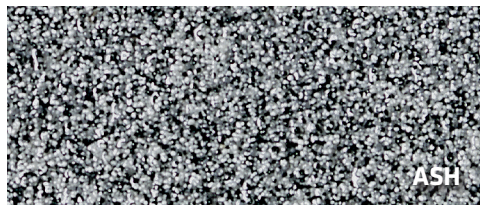
STEEL GRAY



DRIFTWOOD



ACORN



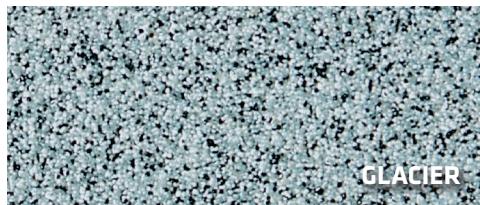
ASH



FRAPPE



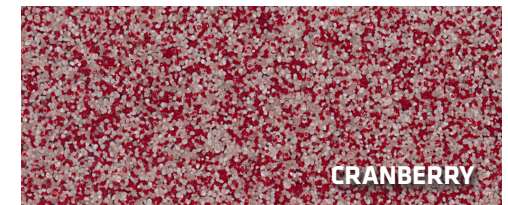
ESPRESSO



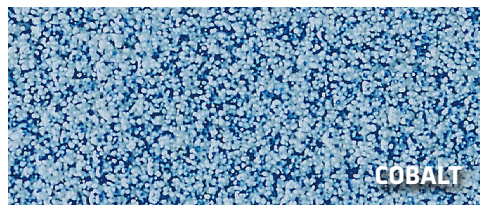
GLACIER



WOOD SMOKE



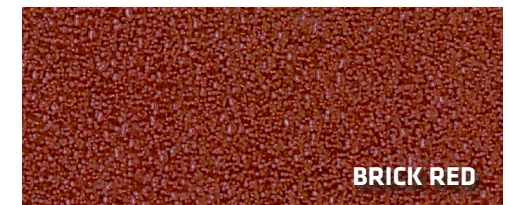
CRANBERRY



COBALT



GOTHAM GRAY



BRICK RED

Color matching available with additional lead time, minimum order requirements and a slight premium.
Color reproductions are as accurate as modern photography and quality printing methods can produce.
For actual color, please request a sample. www.stonhard.com. ©2024 Stonhard

